



Water & Wastewater Transport
 Water & Wastewater Treatment
 Industrial Fluid Handling

ITT is a global engineering company with products and systems working in countless fluid handling applications around the world. We are meeting the challenges of our fluid world with system solutions and deep applications expertise.

- ❖ Advanced treatment systems to clean and disinfect water before we drink it and after we use it.
- ❖ Intelligent pumps and controls to transport water and wastewater for all municipal and commercial needs.
- ❖ Fluid handling pumps and related systems for every conceivable industrial and agricultural application.

We are focused on producing highly efficiency products that use less energy, providing environmental benefits to users and the communities in which our products operate.

Our systems are engineered for reliability, reducing maintenance and the overall life-cycle costs of ownership.

ITT is a trusted global force that works on a local level. No matter what the fluid handling task, ITT's products, solutions and services are truly Engineered for life.

For more information about ITT's fluid solutions:
www.ittfluidbusiness.com
www.itt.com

ITT
 1133 Westchester Avenue
 White Plains, NY 10604
 Phone: 914 641 2000
 Fax: 914 696 2950

Engineered for life

Customer Care

To maximize uptime and meet production goals, ITT's global network of service centers for aftermarket customer care provides for the repair and service of all brands of pumps and rotating equipment, engineering upgrades, and contract maintenance.

Committed to Wise and Sustainable Development

ITT is committed to the wise and sustainable development and use of the world's water resources. Our focus is on providing innovative equipment, systems and applications knowledge to users of water throughout the cycle of water. We are also dedicated to preserving the environment and nurturing knowledge and awareness of the world's water issues through our support of non-governmental organizations.

Each year, ITT is included on more lists of the most admired, best-managed and most ethical companies in the world. ITT is a business that cares about its customers, employees, communities, suppliers and investors. We want all of these key stakeholders to feel proud about what we do and how we do it. That's the definition of a good global citizen.

About ITT Corporation

ITT Corporation (www.itt.com) supplies advanced technology products and services in several growth markets. ITT is a global leader in the transport, treatment and control of water, wastewater and other fluids. The company plays a vital role in international security through its defense communications and electronics products; space surveillance and intelligence systems; and advanced engineering and related services.



Water Transport /
Distribution

Filtration

Water Pumping

Municipal
Wastewater
Treatment

Disinfection

Desalination

Industrial Fluid
Handling

total system solutions
 for our fluid world



Engineered for life

Industrial
Wastewater
Treatment

Water Reuse

Water Treatment

ITT offers a complete range of advanced treatment solutions for water across residential, municipal, commercial and industrial markets.

Disinfection offerings include world-class ultraviolet (UV) and ozone oxidation solutions for water treatment. ITT also provides chlorination dosing and monitoring products and systems, together with supporting services.

A wide-range of membrane filtration (RO/NF/MF/UF) and media filtration systems are provided for purifying and desalinating water for municipal, commercial and industrial process applications. ITT's filtration system solutions range from packaged residential units to city-scale treatment installations.

Wastewater

Once clean water has served its human needs, effluent stations equipped with ITT submersible pumps and mixers transport wastewater to treatment facilities.

The fundamental task of biological wastewater treatment – the breaking down and removal of contaminants – is achieved using ITT's advanced aeration, sequence batch reactor, and membrane bioreactor solutions. For communities requiring technologies for water reuse, ITT provides integrated biological process systems for producing a high quality water product.

At the heart of thousands of treatment plants around the world, submersible pumps, monitoring & control equipment, mixers, clarifiers and media filtration systems from ITT are integral to moving and managing wastewater treatment and sludge processing.

Before the water is returned to nature, ITT's ozone, UV and chlorine systems are employed for disinfection. ITT's membrane filtration systems are used to re-purify water, making it suitable for recharging groundwater aquifers or reuse in a wide variety of applications.

Industrial Fluid Handling

Transport a highly corrosive liquid...gently handle a fragile biotech compound...treat industrial effluent...ITT supplies pump, valve and water/wastewater treatment systems for every conceivable industrial application – with millions of installed products and systems around the world.

ITT pump systems are supplied with non-clogging impellers, intelligent controls and predictive conditioning monitoring systems. Customers engaging our "total systems" approach find dramatically lower life cycle costs including reduced energy consumption and maintenance.

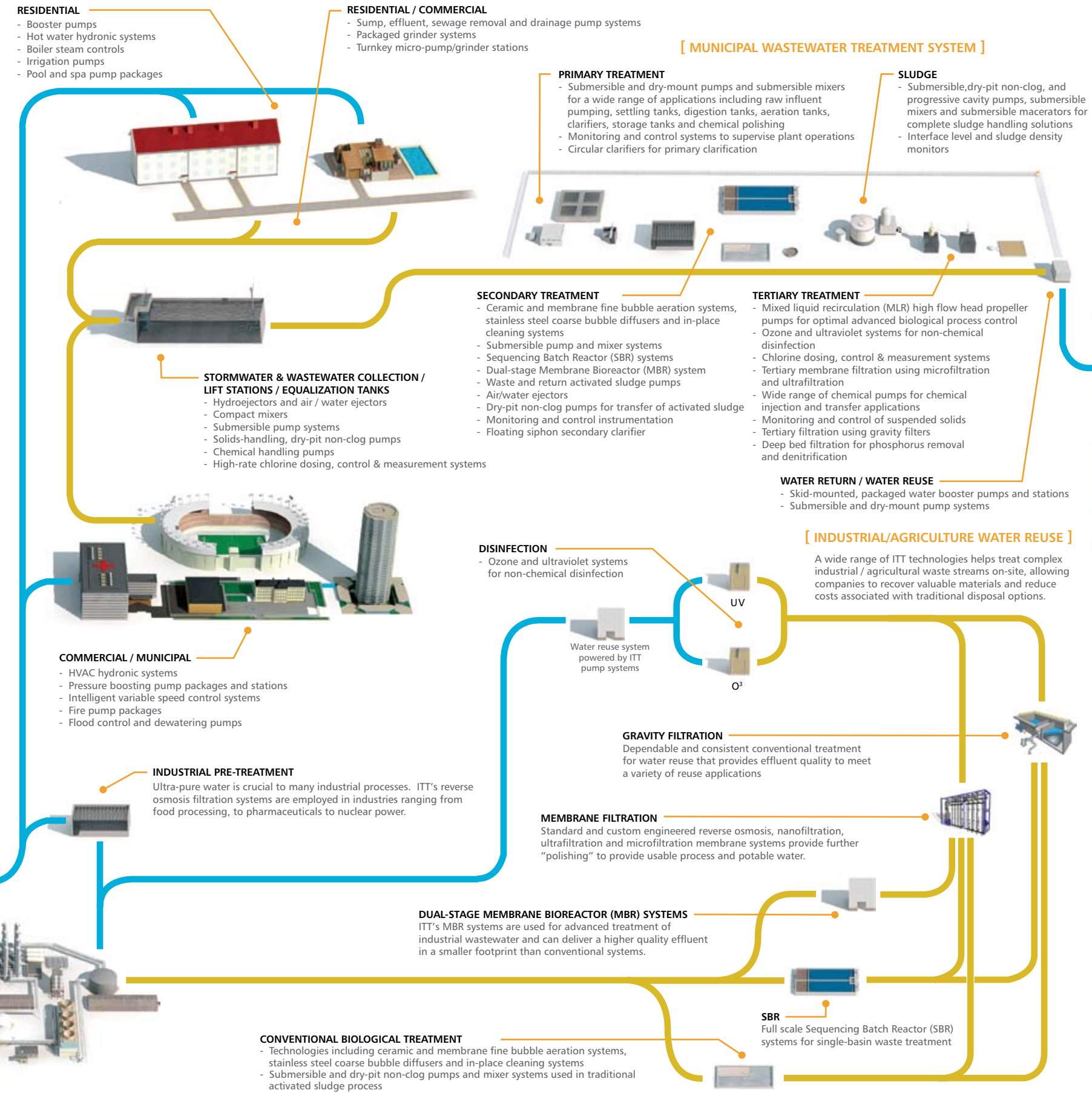
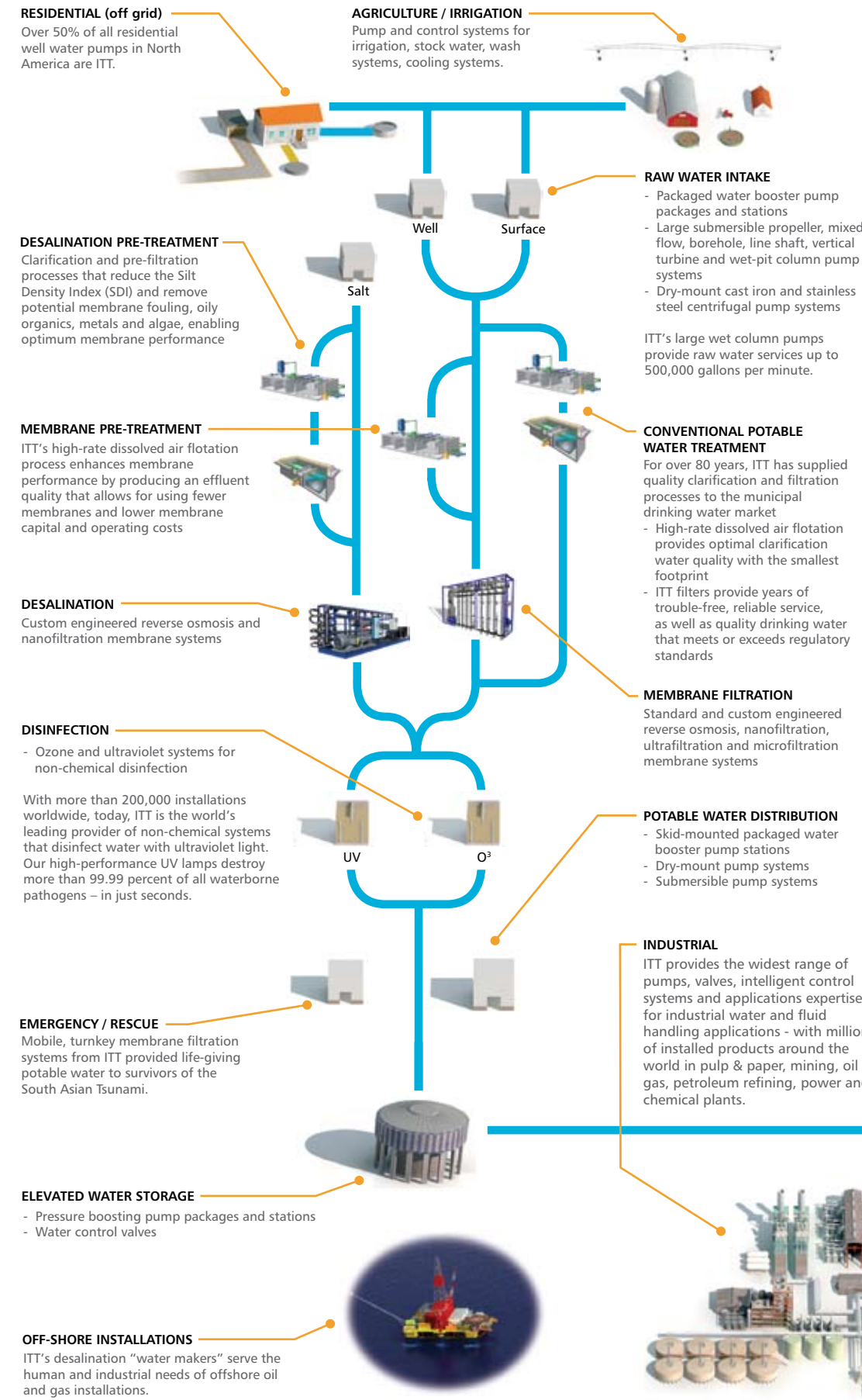
For those industries requiring ultra-pure water, ITT's extensive membrane filtration technologies produce high-purity process water and also help meet wastewater treatment, water reuse and zero-discharge goals for industries including food processing, tanneries and dyeing. ITT also offers integrated wastewater treatment solutions including membrane bioreactors to meet requirements for high-quality effluent treatment. Scalable biological treatment systems and disinfection solutions assist in dealing with complex waste streams

Residential & Commercial Water

For municipal and commercial water supply networks, ITT's powerful pumps draw water from its source. Packaged pump systems move water to and from treatment plants, to storage facilities, and on through the distribution system to residential, municipal, commercial and industrial consumers.

Inside the buildings, homes and factories where we live, work and play, ITT's pump packages equipped with intelligent control systems provide water for HVAC and utility service. Our reliable fire pump packages stand ready to power water supply for emergency use.

For those homes, farms, commercial and industrial customers off the municipal distribution grid, ITT's wide range of submersible and turbine pumps supply water from underground wells and surface water sources.



solutions
total system solutions